

The special pulley wheels are made of aluminium alloy, mounted on ball bearings. The frame is made of galvanised steel.
 The groove can be lined by steel or aluminium sectors; the groove can also be vulcanized or completely machined in an all aluminium round shape.
 The ball bearings can be supplied with conductive grease to assure a better earthing property to the pulley



CAQ 826 EARTHING DEVICE DETAILS



CAQ 826 EARTHING DEVICE



CAQ 826



HELICOPTER PULLEY



CAE 630



ALL ALUMINIUM PULLEY



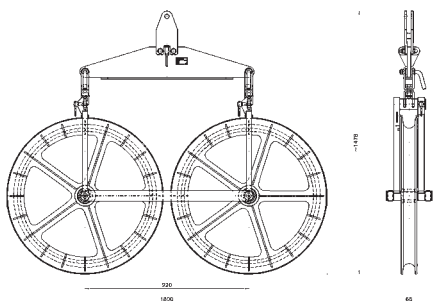
HEAD BOARD CROSSING A CAE 637



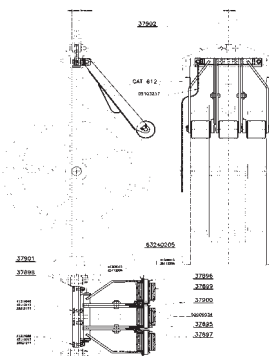
CAE 637



CAE 637



TANDEM PULLEY



CAT EARTHING DEVICE

